

# ASSESSOR'S RECORD MAP

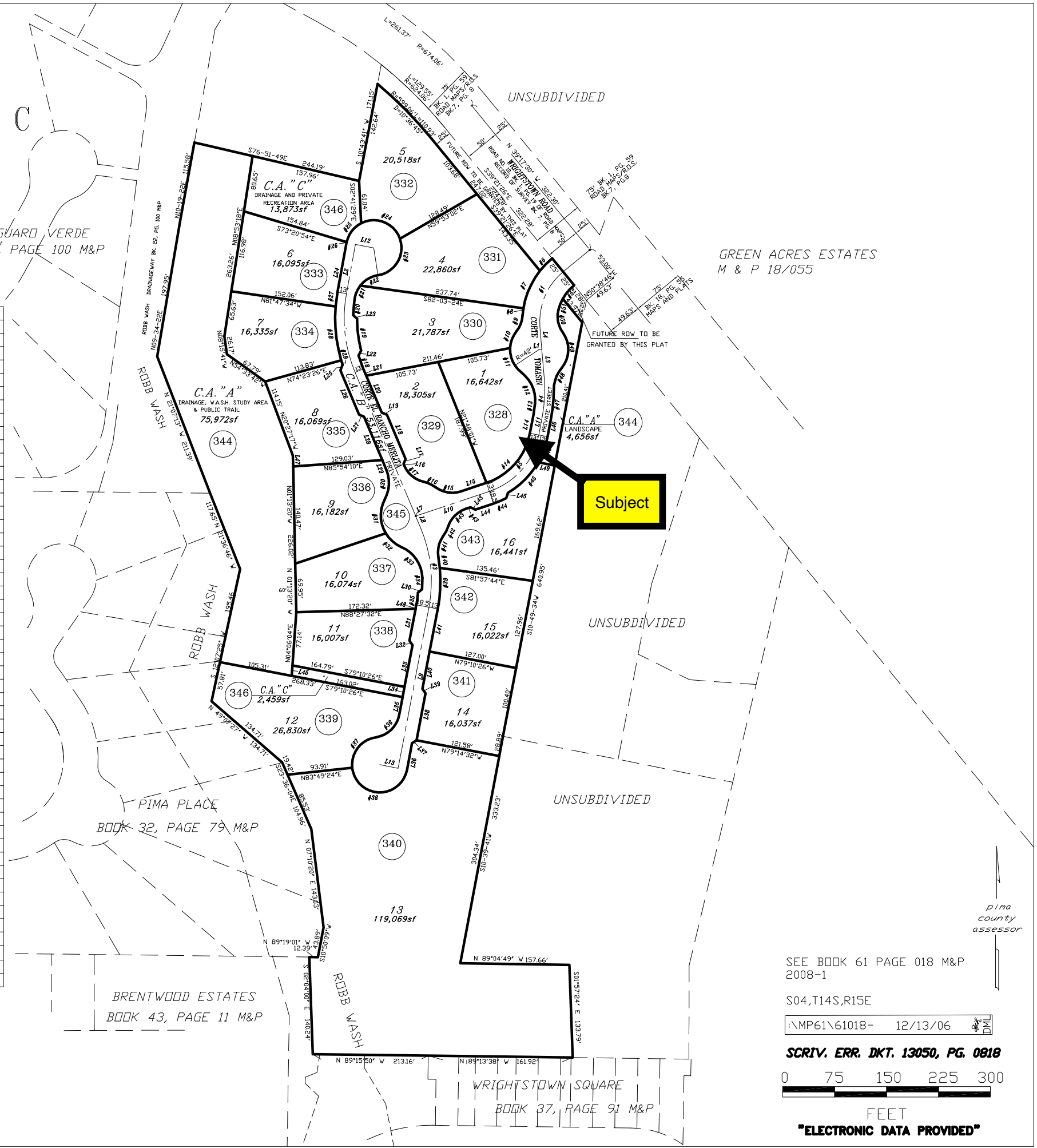
## EL RANCHO MERLITA

### LOTS 1-16 & COMMON AREA A - C

133-07

CURVE TABLE					
CURVE	LENGTH	RADIUS	DELTA	CHORD	CH. BEARING
C1	89.73'	93.00'	55°17'00"	86.29'	S22°49'37"W
C2	115.93'	200.00'	33°12'46"	114.32'	S06°16'25"E
C3	117.66'	200.00'	33°42'21"	115.97'	N06°01'37"W
C4	54.60'	200.00'	15°38'26"	54.43'	N03°00'20"E
C5	113.36'	107.00'	60°42'10"	108.13'	N41°10'39"E
C6	25.20'	118.00'	12°14'05"	25.15'	S44°23'17"W
C7	59.73'	118.00'	29°00'11"	59.10'	S23°46'09"W
C8	10.40'	118.00'	5°03'04"	10.40'	S06°44'31"W
C9	25.03'	42.00'	34°08'46"	24.66'	N21°17'22"E
C10	26.17'	42.00'	35°41'42"	25.74'	S20°30'54"W
C11	40.62'	42.00'	55°24'39"	39.05'	S25°02'16"E
C12	51.21'	50.00'	58°40'53"	49.00'	N23°24'09"W
C13	15.95'	187.00'	4°53'17"	15.95'	N08°22'55"E
C14	99.59'	94.00'	60°42'10"	95.00'	N41°10'39"E
C15	38.19'	40.00'	54°42'20"	36.76'	S81°07'06"E
C16	20.10'	50.00'	23°02'10"	19.97'	N65°17'01"W
C17	37.64'	40.00'	53°55'18"	36.27'	S49°50'27"E
C18	20.52'	187.00'	6°17'14"	20.51'	S19°44'11"E
C19	46.30'	181.50'	14°37'02"	46.18'	S07°27'38"E
C20	24.33'	187.00'	7°27'20"	24.32'	S05°14'00"W
C21	20.30'	40.00'	29°04'28"	20.08'	S23°29'55"W
C22	30.23'	40.00'	43°17'59"	29.51'	S59°41'08"W
C23	70.19'	40.00'	100°32'26"	61.53'	N31°03'54"E
C24	68.43'	40.00'	98°01'08"	60.39'	N68°12'53"W
C25	35.38'	40.00'	50°40'21"	34.23'	S37°26'23"W
C26	1.24'	40.00'	1°46'14"	1.24'	S11°13'05"W
C27	20.93'	213.00'	5°37'49"	20.92'	S07°31'04"W
C28	78.57'	213.00'	21°08'06"	78.13'	S05°51'54"E
C29	6.86'	213.00'	1°50'40"	6.86'	S17°21'17"E
C30	44.46'	50.00'	50°57'00"	43.01'	N02°35'42"E
C31	51.52'	50.00'	59°02'10"	49.27'	S01°26'53"E
C32	30.94'	50.00'	35°27'21"	30.45'	S48°41'39"E
C33	56.71'	50.00'	64°59'22"	53.72'	N33°55'38"W
C34	16.32'	187.00'	4°59'57"	16.31'	N01°04'02"E
C35	23.74'	181.50'	7°29'39"	23.72'	N08°57'45"E
C36	49.59'	40.00'	71°02'04"	46.48'	N46°20'36"E
C37	61.46'	40.00'	88°02'13"	55.59'	S37°50'31"W
C38	113.79'	40.00'	162°59'50"	79.12'	S87°40'31"E
C39	59.66'	213.00'	16°02'51"	59.46'	N02°48'08"E
C40	15.97'	213.00'	4°17'45"	15.97'	N07°22'10"W
C41	31.97'	40.00'	45°47'17"	31.12'	S13°22'36"W
C42	15.60'	50.00'	17°52'19"	15.53'	N27°20'05"E
C43	37.09'	40.00'	53°07'48"	35.78'	S44°57'50"W
C44	20.14'	125.50'	9°11'47"	20.12'	N66°55'50"E
C45	62.59'	120.00'	29°53'02"	61.88'	N44°41'27"E
C46	39.63'	120.00'	18°55'23"	39.45'	N20°17'15"E
C47	40.73'	213.00'	10°57'19"	40.66'	N05°20'54"E
C48	34.54'	50.00'	39°34'51"	33.86'	S19°39'40"W
C49	55.25'	42.00'	75°22'15"	51.35'	N01°45'58"E
C50	34.16'	39.00'	50°11'22"	33.08'	S10°49'28"E
C51	17.26'	68.00'	14°32'45"	17.22'	S21°32'35"W
C52	25.62'	68.00'	21°35'19"	25.47'	S39°36'37"W

LINE TABLE		
LINE	LENGTH	BEARING
L1	3.76'	N85°11'07"E
L2	72.12'	S10°19'58"W
L3	42.73'	S04°48'53"E
L4	32.36'	S04°48'53"E
L5	49.69'	N50°38'34"E
L6	224.04'	N22°52'48"W
L7	1.00'	N22°52'48"W
L8	17.79'	N22°52'48"W
L9	236.57'	N10°49'34"E
L10	112.21'	N71°31'44"E
L11	27.34'	N10°49'34"E
L12	27.00'	N79°40'02"W
L13	27.00'	S79°10'26"E
L14	27.34'	N10°49'34"E
L15	38.82'	N71°31'44"E
L16	2.29'	S22°52'48"E
L17	7.78'	S22°07'12"W
L18	69.41'	S22°52'48"E
L19	7.78'	S67°52'48"E
L20	57.84'	S22°52'48"E
L21	10.75'	S22°52'48"E
L22	8.04'	S27°28'50"W
L23	7.66'	S45°13'02"E
L24	72.12'	N10°19'58"E
L25	8.75'	N22°07'53"E
L26	69.41'	N22°52'48"W
L27	7.78'	N67°52'48"W
L28	67.77'	N22°52'48"W
L29	14.60'	N22°52'48"W
L30	7.64'	N50°26'18"E
L31	46.71'	N10°49'34"E
L32	7.78'	N34°10'26"W
L33	61.31'	N10°49'34"E
L34	15.00'	N10°49'34"E
L35	26.45'	N10°49'34"E
L36	39.14'	S10°49'34"W
L37	7.78'	S55°49'34"W
L38	68.97'	S10°49'34"W
L39	7.78'	S34°10'26"E
L40	54.97'	S10°49'34"W
L41	62.49'	S10°49'34"W
L42	7.13'	S71°31'44"W
L43	7.78'	N63°28'16"W
L44	27.65'	S71°31'44"W
L45	7.98'	S17°25'38"W
L46	27.34'	S10°49'34"W
L47	15.61'	N01°13'20"W
L48	5.94'	S10°49'34"W
L49	24.49'	S79°10'26"E



**Subject**

SEE BOOK 61 PAGE 018 M&P 2008-1

S04,T14S,R15E

:\NMP61\61018- 12/13/06

SCRIV. ERR. DKT. 13050, PG. 0818



FEET  
"ELECTRONIC DATA PROVIDED"

pima county assessor