

ASSESSOR'S RECORD MAP SECTION 23, TOWNSHIP 12 SOUTH, RANGE 12 EAST

221-06

MARANA CENTER
SQ20142340180
(221-04)

NOW
LINDA VISTA VILLAGE
AT CASCADE
LOTS 1-39, 1-93, 1-131
BLOCK 1-7 & C.A. A-H
SQ20202620186 M&P
(216-45)

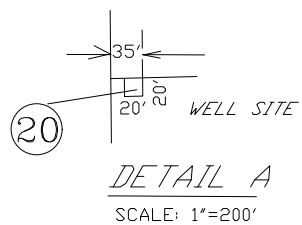
HARTMAN VISTAS
LOTS 1-353
BLOCKS I & II
C.A. "A-D"
M&P 55/042
(221-06)

MARANA 59
M&P 63/090
(221-06)

HARTMAN
TEN
LOTS 1-10
M&P 53/008
(221-06)

NOW
DE ANZA
SQ20170060460
(221-06)

Subject



CASA GRANDE HWY.

2021-1 SD:01/08/20

\\T12S\1212E23-05/21/21 SBG IS



pima
county
assessor

