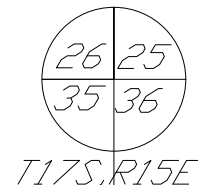


ASSESSOR'S RECORD MAP

OCOTILLO PRESERVE

LOTS 001-042

305-38



LINE TABLE			LINE TABLE		
LINE #	BEARING	DISTANCE	LINE #	BEARING	DISTANCE
L30	N 02-46-55 W	144.36'	L53	S 30-40-55 E	75.00'
L31	S 89-47-26 E	20.26'	L54	S 30-40-55 E	40.00'
L32	N 09-24-30 E	119.07'	L55	NOT USED	
L33	N 00-01-55 E	53.57'	L56	NOT USED	
L34	N 00-01-55 E	76.30'	L57	NOT USED	
L35	N 02-46-55 W	152.24'	L58	NOT USED	
L36	S 89-47-26 E	70.00'	L59	NOT USED	
L37	N 09-24-30 E	70.00'	L60	S 09-53-41 E	70.00'
L38	NOT USED		L61	S 80-06-19 W	70.00'
L39	NOT USED		L62	NOT USED	
L40	N 24-11-15 E	50.00'	L63	NOT USED	
L41	N 25-14-26 W	270.17'	L64	NOT USED	
L42	N 85-20-44 W	82.86'	L65	NOT USED	
L43	N 64-41-31 W	232.02'	L66	NOT USED	
L44	N 80-12-45 W	136.44'	L67	NOT USED	
L45	N 47-26-10 W	158.91'	L68	NOT USED	
L46	N 36-39-09 E	30.00'	L69	NOT USED	
L47	NOT USED		L70	S 09-24-30 W	70.00'
L48	NOT USED		L71	S 89-47-26 E	70.00'
L49	NOT USED				
L50	S 30-40-55 E	23.27'			
L51	S 89-57-17 E	75.63'			
L52	N 59-19-05 E	70.00'			

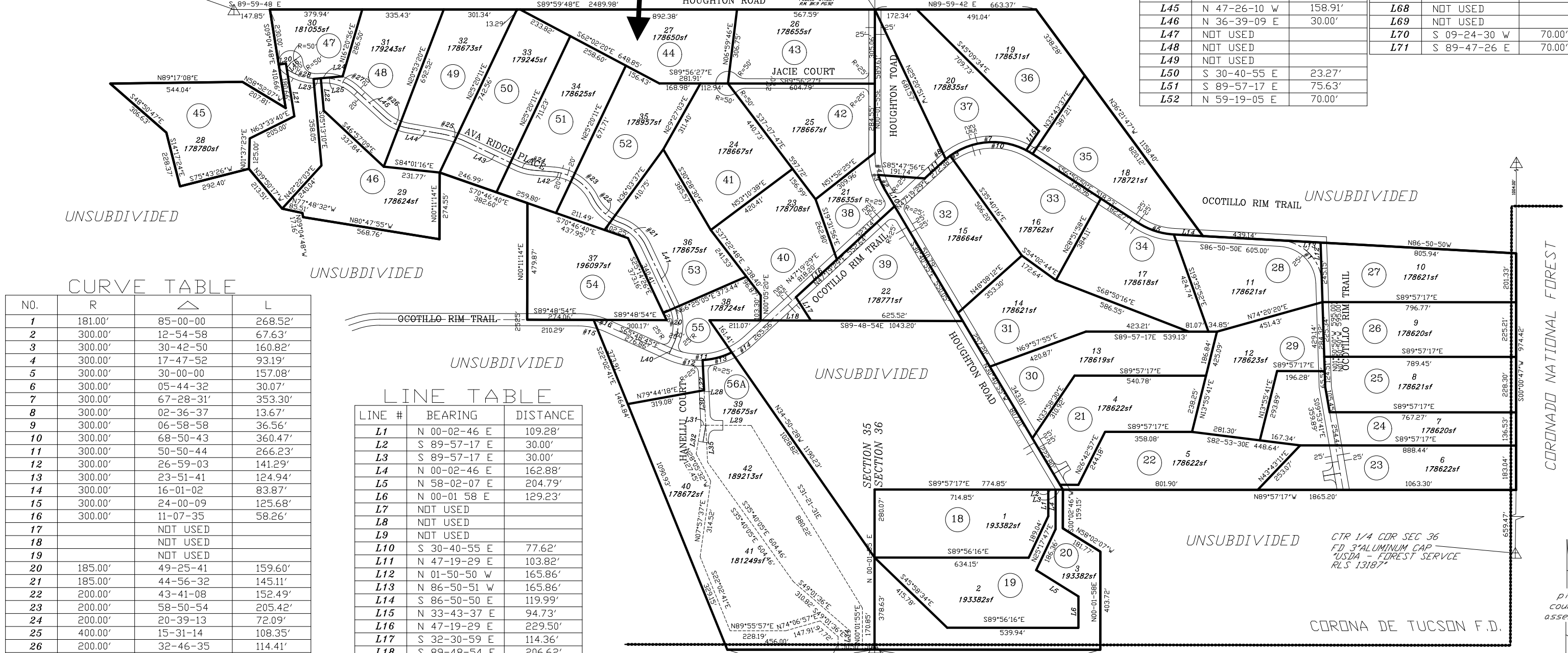
Subject Property

N 1/4 CDR SEC 35
FD 2.5" G.L.D. BCP 1930

NE COR SEC 35
NW COR SEC 36
FD 1/2" REBAR
BENT, NO TAG

NO.	R	△	L
1	181.00'	85-00-00	268.52'
2	300.00'	12-54-58	67.63'
3	300.00'	30-42-50	160.82'
4	300.00'	17-47-52	93.19'
5	300.00'	30-00-00	157.08'
6	300.00'	05-44-32	30.07'
7	300.00'	67-28-31'	353.30'
8	300.00'	02-36-37	13.67'
9	300.00'	06-58-58	36.56'
10	300.00'	68-50-43	360.47'
11	300.00'	50-50-44	266.23'
12	300.00'	26-59-03	141.29'
13	300.00'	23-51-41	124.94'
14	300.00'	16-01-02	83.87'
15	300.00'	24-00-09	125.68'
16	300.00'	11-07-35	58.26'
17		NOT USED	
18		NOT USED	
19		NOT USED	
20	185.00'	49-25-41	159.60'
21	185.00'	44-56-32	145.11'
22	200.00'	43-41-08	152.49'
23	200.00'	58-50-54	205.42'
24	200.00'	20-39-13	72.09'
25	400.00'	15-31-14	108.35'
26	200.00'	32-46-35	114.41'
27	185.00'	47-47-01	154.29'
28	205.86'	41-52-20	150.44'

LINE #	BEARING	DISTANCE
L1	N 00-02-46 E	109.28'
L2	S 89-57-17 E	30.00'
L3	S 89-57-17 E	30.00'
L4	N 00-02-46 E	162.88'
L5	N 58-02-07 E	204.79'
L6	N 00-01 58 E	129.23'
L7	NOT USED	
L8	NOT USED	
L9	NOT USED	
L10	S 30-40-55 E	77.62'
L11	N 47-19-29 E	103.82'
L12	N 01-50-50 W	165.86'
L13	N 86-50-51 W	165.86'
L14	S 86-50-50 E	119.99'
L15	N 33-43-37 E	94.73'
L16	N 47-19-29 E	229.50'
L17	S 32-30-59 E	114.36'
L18	S 89-48-54 E	206.62'
L19	NOT USED	
L20	N 80-55-12 E	30.00'
L21	S 09-04-48 E	220.00'
L22	S 05-13-10 E	133.85'
L23	N 84-46-50 E	30.00'
L24	N 84-46-50 E	120.29'
L25	N 84-46-50 E	90.29'
L26	S 25-14-26 E	32.75'
L27	S 02-46-55 E	124.33'
L28	S 02-46-55 E	268.69'
L29	S 89-47-26 E	186.51'



CTR 1/4 CDR SEC 36
FD 3" ALUMINUM CAP
"USDA - FOREST SERVICE
RLS 13187"

E 1/4 CDR SEC 35, W 1/4 CDR SEC 36
FD 2.5" G.L.D. BRASS CAP PIPE 1930", SET LOOSELY
IN ROCK MOUND, ACCEPTED AT THE POSITION
CALLED BY BK.14 PG.33 OF R.D.S.

SEE BOOK 60 PAGE 020 M&P
2024-1

S35,T17S,R15E
S36,T17S,R15E

AMP60\60020- 02/16/23



FEET
"ELECTRONIC DATA PROVIDED"

pima county assessor