

1/4 sec 24, N 1/4 sec 26, N 1/4 sec 28, N 1/4 sec 30, N 1/4 sec 32, N 1/4 sec 34, N 1/4 sec 36, N 1/4 sec 38, N 1/4 sec 40, N 1/4 sec 42, N 1/4 sec 44, N 1/4 sec 46, N 1/4 sec 48, N 1/4 sec 50, N 1/4 sec 52, N 1/4 sec 54, N 1/4 sec 56, N 1/4 sec 58, N 1/4 sec 60, N 1/4 sec 62, N 1/4 sec 64, N 1/4 sec 66, N 1/4 sec 68, N 1/4 sec 70, N 1/4 sec 72, N 1/4 sec 74, N 1/4 sec 76, N 1/4 sec 78, N 1/4 sec 80, N 1/4 sec 82, N 1/4 sec 84, N 1/4 sec 86, N 1/4 sec 88, N 1/4 sec 90, N 1/4 sec 92, N 1/4 sec 94, N 1/4 sec 96, N 1/4 sec 98, N 1/4 sec 100

For continuation see Sheet 3 top right

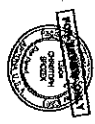
Match line - for continuation see bottom left

Key Notes

- 1) Proposed 42' private access and public utility easements to be granted by the plan.
- 2) Proposed additional access and public utility easements for existing improvements to be granted by the plan.
- 3) Proposed existing setback lines.
- 4) 100-year flood prone areas.
- 5) 20' private access, drainage and public utility easements, Dkt. 10028 Pgs. 181, 182 and Dkt. 10029 Pgs. 181, 182.
- 6) 20' private access, drainage and public utility easements, Dkt. 10028 Pgs. 181, 182 and Dkt. 10029 Pgs. 181, 182.
- 7) 20' private access, drainage and public utility easements, Dkt. 10028 Pgs. 181, 182 and Dkt. 10029 Pgs. 181, 182.
- 8) 20' private access, drainage and public utility easements, Dkt. 10028 Pgs. 181, 182 and Dkt. 10029 Pgs. 181, 182.
- 9) 20' private access, drainage and public utility easements, Dkt. 10028 Pgs. 181, 182 and Dkt. 10029 Pgs. 181, 182.
- 10) 20' private access, drainage and public utility easements, Dkt. 10028 Pgs. 181, 182 and Dkt. 10029 Pgs. 181, 182.
- 11) 20' private access, drainage and public utility easements, Dkt. 10028 Pgs. 181, 182 and Dkt. 10029 Pgs. 181, 182.
- 12) 20' private access, drainage and public utility easements, Dkt. 10028 Pgs. 181, 182 and Dkt. 10029 Pgs. 181, 182.
- 13) 20' private access, drainage and public utility easements, Dkt. 10028 Pgs. 181, 182 and Dkt. 10029 Pgs. 181, 182.
- 14) 20' private access, drainage and public utility easements, Dkt. 10028 Pgs. 181, 182 and Dkt. 10029 Pgs. 181, 182.
- 15) 20' private access, drainage and public utility easements, Dkt. 10028 Pgs. 181, 182 and Dkt. 10029 Pgs. 181, 182.
- 16) 20' private access, drainage and public utility easements, Dkt. 10028 Pgs. 181, 182 and Dkt. 10029 Pgs. 181, 182.
- 17) 20' private access, drainage and public utility easements, Dkt. 10028 Pgs. 181, 182 and Dkt. 10029 Pgs. 181, 182.
- 18) 20' private access, drainage and public utility easements, Dkt. 10028 Pgs. 181, 182 and Dkt. 10029 Pgs. 181, 182.
- 19) 20' private access, drainage and public utility easements, Dkt. 10028 Pgs. 181, 182 and Dkt. 10029 Pgs. 181, 182.
- 20) 20' private access, drainage and public utility easements, Dkt. 10028 Pgs. 181, 182 and Dkt. 10029 Pgs. 181, 182.
- 21) 20' private access, drainage and public utility easements, Dkt. 10028 Pgs. 181, 182 and Dkt. 10029 Pgs. 181, 182.
- 22) 20' private access, drainage and public utility easements, Dkt. 10028 Pgs. 181, 182 and Dkt. 10029 Pgs. 181, 182.
- 23) 20' private access, drainage and public utility easements, Dkt. 10028 Pgs. 181, 182 and Dkt. 10029 Pgs. 181, 182.
- 24) 20' private access, drainage and public utility easements, Dkt. 10028 Pgs. 181, 182 and Dkt. 10029 Pgs. 181, 182.
- 25) 20' private access, drainage and public utility easements, Dkt. 10028 Pgs. 181, 182 and Dkt. 10029 Pgs. 181, 182.
- 26) 20' private access, drainage and public utility easements, Dkt. 10028 Pgs. 181, 182 and Dkt. 10029 Pgs. 181, 182.
- 27) 20' private access, drainage and public utility easements, Dkt. 10028 Pgs. 181, 182 and Dkt. 10029 Pgs. 181, 182.
- 28) 20' private access, drainage and public utility easements, Dkt. 10028 Pgs. 181, 182 and Dkt. 10029 Pgs. 181, 182.
- 29) 20' private access, drainage and public utility easements, Dkt. 10028 Pgs. 181, 182 and Dkt. 10029 Pgs. 181, 182.
- 30) 20' private access, drainage and public utility easements, Dkt. 10028 Pgs. 181, 182 and Dkt. 10029 Pgs. 181, 182.
- 31) 20' private access, drainage and public utility easements, Dkt. 10028 Pgs. 181, 182 and Dkt. 10029 Pgs. 181, 182.
- 32) 20' private access, drainage and public utility easements, Dkt. 10028 Pgs. 181, 182 and Dkt. 10029 Pgs. 181, 182.
- 33) 20' private access, drainage and public utility easements, Dkt. 10028 Pgs. 181, 182 and Dkt. 10029 Pgs. 181, 182.
- 34) 20' private access, drainage and public utility easements, Dkt. 10028 Pgs. 181, 182 and Dkt. 10029 Pgs. 181, 182.
- 35) 20' private access, drainage and public utility easements, Dkt. 10028 Pgs. 181, 182 and Dkt. 10029 Pgs. 181, 182.
- 36) 20' private access, drainage and public utility easements, Dkt. 10028 Pgs. 181, 182 and Dkt. 10029 Pgs. 181, 182.
- 37) 20' private access, drainage and public utility easements, Dkt. 10028 Pgs. 181, 182 and Dkt. 10029 Pgs. 181, 182.
- 38) 20' private access, drainage and public utility easements, Dkt. 10028 Pgs. 181, 182 and Dkt. 10029 Pgs. 181, 182.
- 39) 20' private access, drainage and public utility easements, Dkt. 10028 Pgs. 181, 182 and Dkt. 10029 Pgs. 181, 182.
- 40) 20' private access, drainage and public utility easements, Dkt. 10028 Pgs. 181, 182 and Dkt. 10029 Pgs. 181, 182.
- 41) 20' private access, drainage and public utility easements, Dkt. 10028 Pgs. 181, 182 and Dkt. 10029 Pgs. 181, 182.
- 42) 20' private access, drainage and public utility easements, Dkt. 10028 Pgs. 181, 182 and Dkt. 10029 Pgs. 181, 182.

Tentative Plat
Ocotillo Preserve
 Lots 1 through 42

CHRISTOPHER BROZEK AICP PE
 1212 N. Saddle, Tucson AZ 85716
 Plan 972111-P
 January 20, 2024
 Revised
 April 24, 2024
 Ref: Cat(09)02-19
 Sheet 2 of 3



SCALE 1" = 100'
 0" 100' 200' FT
 CONTOUR INTERVAL 2 FT

For continuation see Sheet 3

For continuation see Sheet 2

see Sheet 2

For continuation see Sheet 2

NE COR SEC 36
R. 12 S. R. 36 E.
T. 22 N. R. 12 E.
B.M. No. 182

Houghton Rd
1/4 Sec 36
1/4 Sec 35
1/4 Sec 34
1/4 Sec 33
1/4 Sec 32
1/4 Sec 31
1/4 Sec 30
1/4 Sec 29
1/4 Sec 28
1/4 Sec 27
1/4 Sec 26
1/4 Sec 25
1/4 Sec 24
1/4 Sec 23
1/4 Sec 22
1/4 Sec 21
1/4 Sec 20
1/4 Sec 19
1/4 Sec 18
1/4 Sec 17
1/4 Sec 16
1/4 Sec 15
1/4 Sec 14
1/4 Sec 13
1/4 Sec 12
1/4 Sec 11
1/4 Sec 10
1/4 Sec 9
1/4 Sec 8
1/4 Sec 7
1/4 Sec 6
1/4 Sec 5
1/4 Sec 4
1/4 Sec 3
1/4 Sec 2
1/4 Sec 1



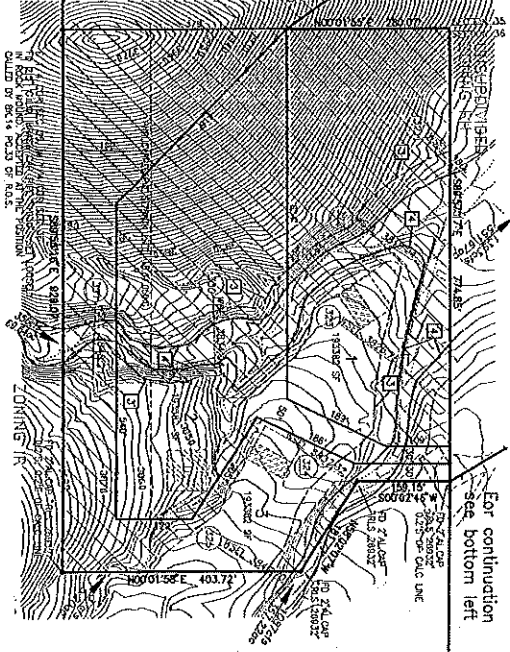
SCALE 1" = 100'
Graphic Scale: 100 200 FT
CONTINUOUS INTERVAL 2 FT

Key Notes

- 1 Proposed AP project access and public utility easements to be granted by this plan.
- 2 Proposed additional access and public utility easements for utility improvements to be granted by this plan.
- 3 Proposed easement without items.
- 4 100-year flood zone limits.
- 5 200' private stream, width of 400' public stream to be granted by this plan.
- 6 200' private stream, width of 400' public stream to be granted by this plan.
- 7 200' private stream, width of 400' public stream to be granted by this plan.
- 8 200' private stream, width of 400' public stream to be granted by this plan.
- 9 200' private stream, width of 400' public stream to be granted by this plan.
- 10 200' private stream, width of 400' public stream to be granted by this plan.
- 11 200' private stream, width of 400' public stream to be granted by this plan.
- 12 200' private stream, width of 400' public stream to be granted by this plan.
- 13 200' private stream, width of 400' public stream to be granted by this plan.
- 14 200' private stream, width of 400' public stream to be granted by this plan.
- 15 200' private stream, width of 400' public stream to be granted by this plan.
- 16 200' private stream, width of 400' public stream to be granted by this plan.
- 17 200' private stream, width of 400' public stream to be granted by this plan.
- 18 200' private stream, width of 400' public stream to be granted by this plan.
- 19 200' private stream, width of 400' public stream to be granted by this plan.
- 20 200' private stream, width of 400' public stream to be granted by this plan.

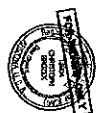
UNSUBDIVIDED ZONING RH

For continuation see Sheet 2 bottom left



For continuation see bottom left

CORONADO NATIONAL FOREST ZONING IR



Tentative Plat
Ocotillo Preserve
Lots 1 through 42

CHARTERED PROFESSIONAL ARCHITECT
1112 N. Nevada Street, Suite 200
San Diego, CA 92107
Phone: 619-594-1111
Fax: 619-594-1112
E-mail: info@charters.com
www.charters.com
June 3, 2004
January 20, 2004
April 24, 2004
Ref: Co18(4)02-19
Sheet 3 of 3

For continuation see top right